

RD SHARMA

Solutions

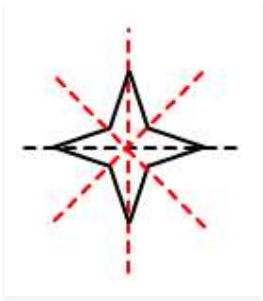
Class 6 Maths

Chapter 17

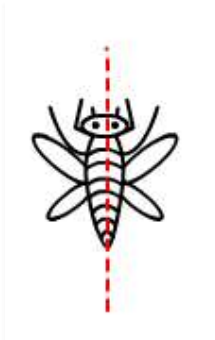
Ex 17.2

1. Find the number of line of symmetry in each of the following shapes

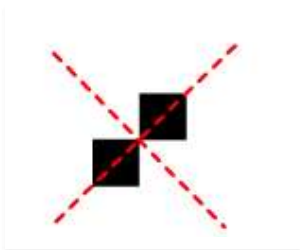
i.



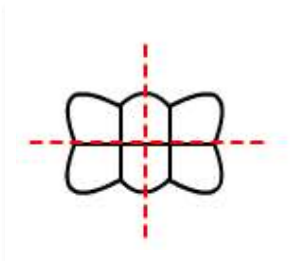
ii.



iii.



iv.

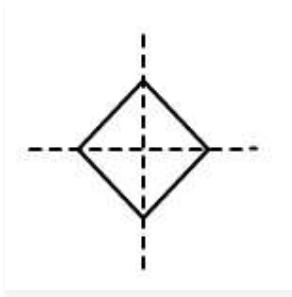


v.

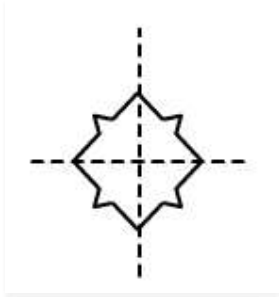


2. Copy the following drawings on a paper and compute each one of them in such a way that resulting figure has two dotted lines as two lines of symmetry:

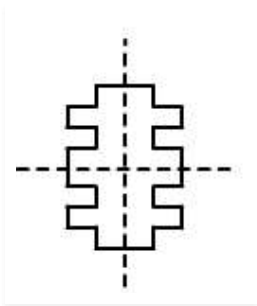
i.



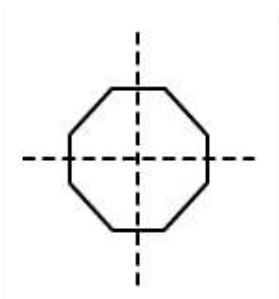
ii.



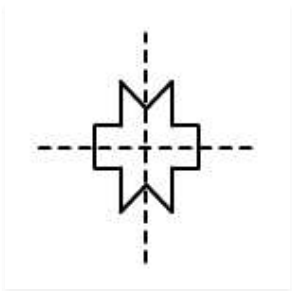
iii.



iv.



v.



vi.

